

Guide to Hui a Tau Organisational chart

Overall Hui Organisation Areas – Level 1 (top layer)

This layer reflects the grouping of broad areas of the hui organisation & identifies the Area Leader.

Level 2

At Level 2 the identified areas from Level 1 are separated into component parts or areas. Subsequent layers of organisation provide the breakdown to detail for each of the areas.

Role of the Area Leader.

Be familiar with the plans for all component parts.

If needed recruit Team Leaders & help them find their key workers.

Stay in touch with progress, & support the Team Leaders for each section.

Responsible for reporting to monthly Hui Planning Meetings.

Role of Team Leaders.

Develop planning as needed remembering context of mahi (part of the Hui a Tau).

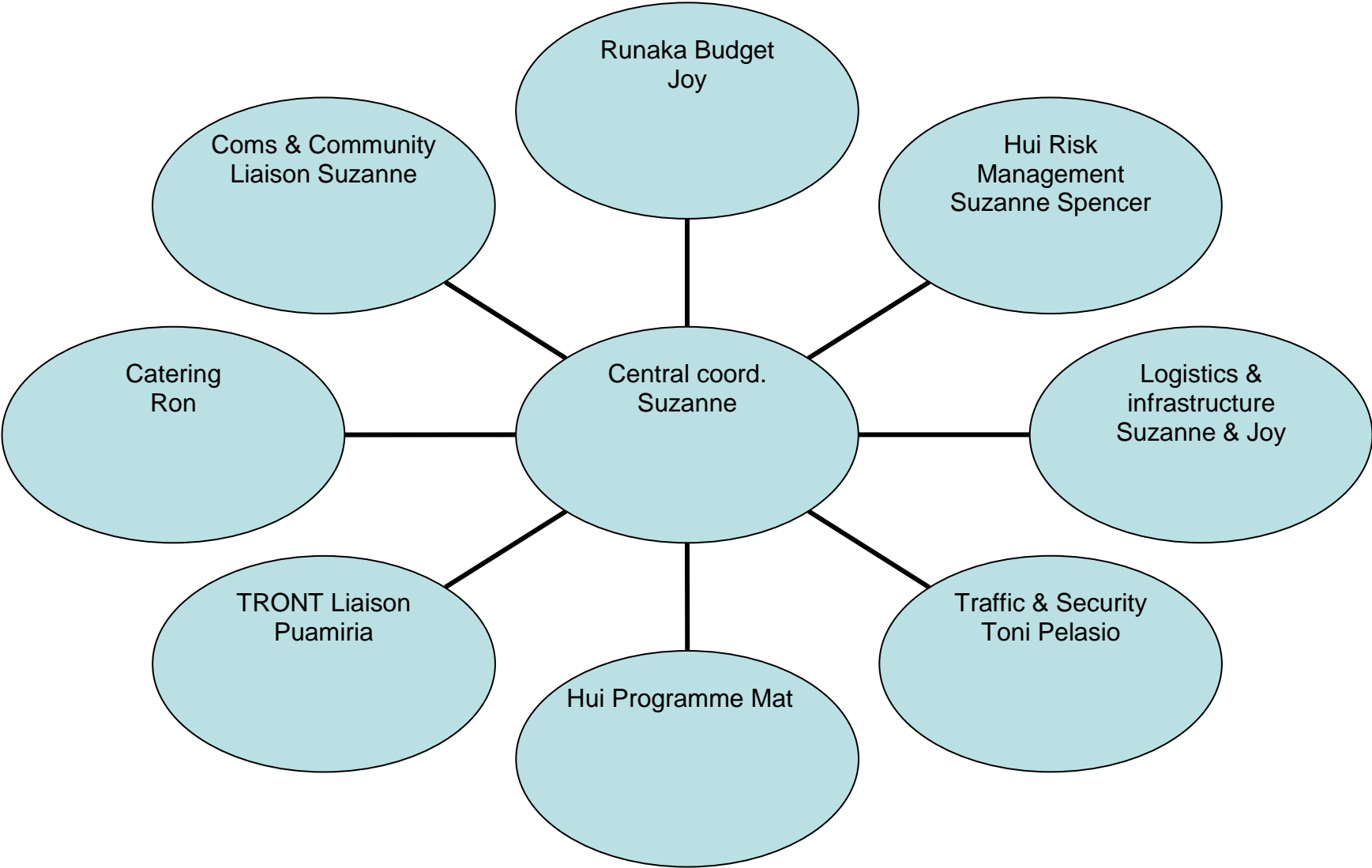
Work out timelines & resources needed.

Recruit key people to help deliver plan.

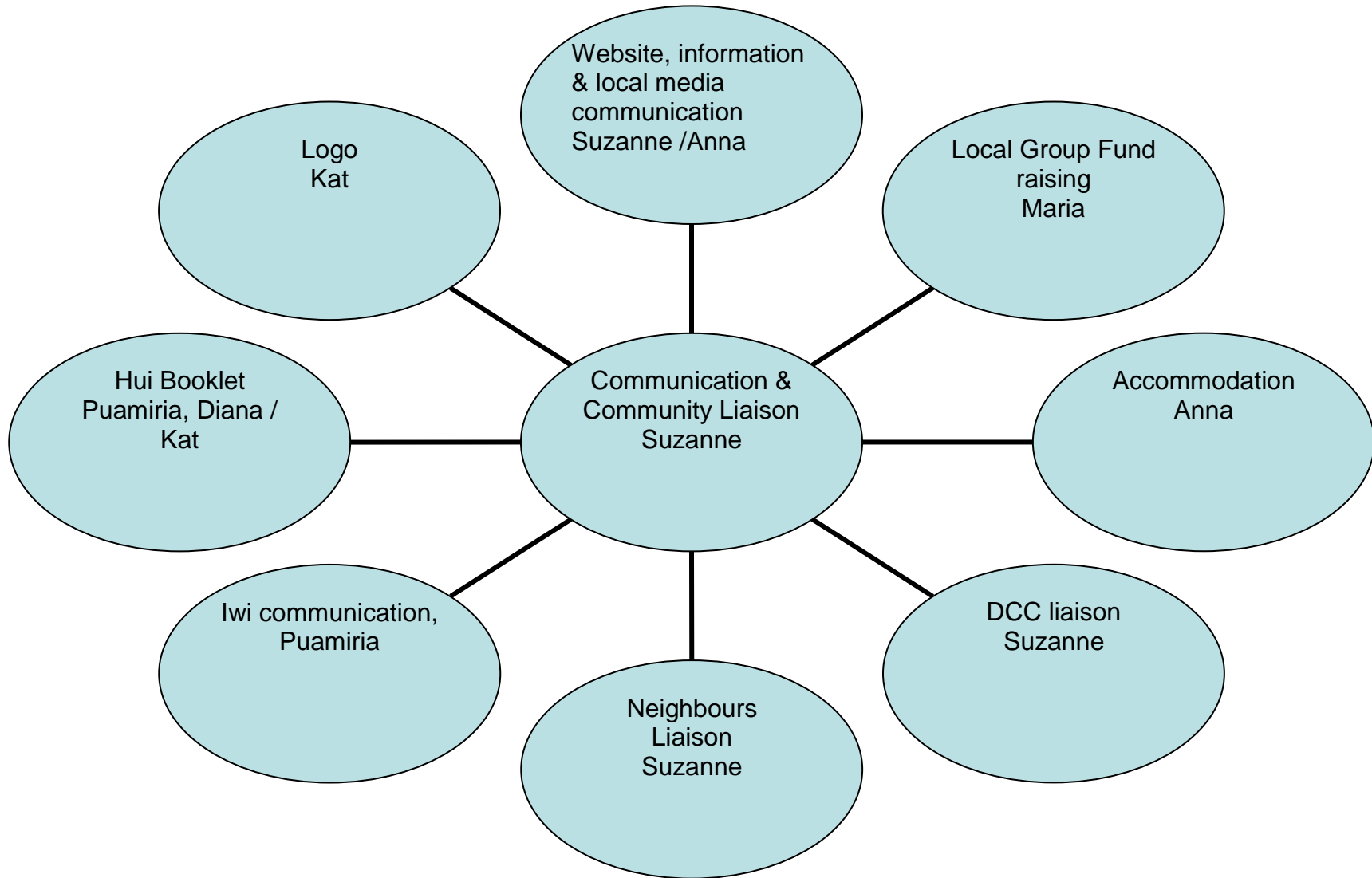
In coordination with Area Leader negotiate for resources outside of your ability to source independently.

Provide regular & full updates on progress & any issues to Area Leader.

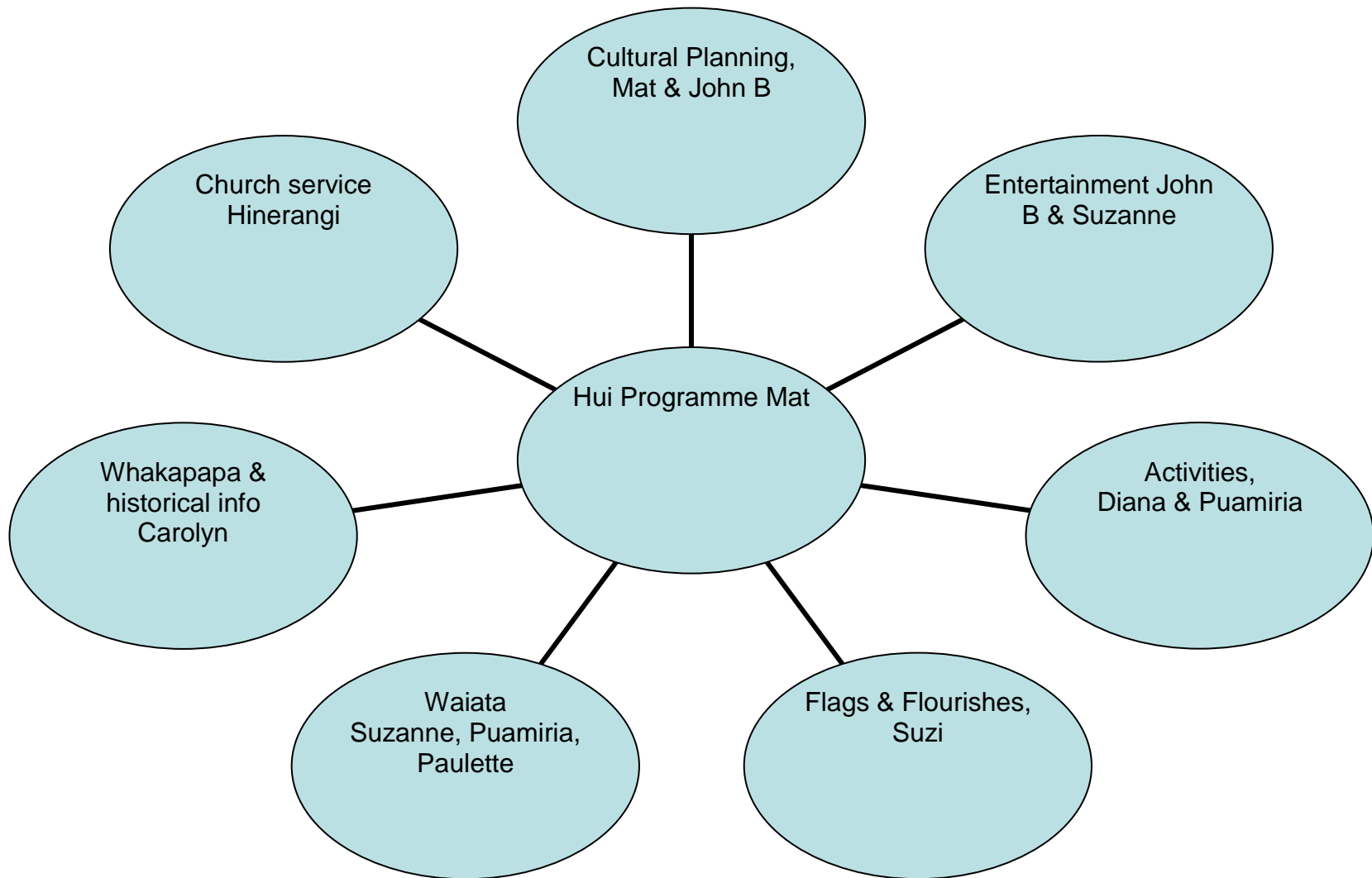
Overall Hui Organisation Areas – Level 1 (top layer)



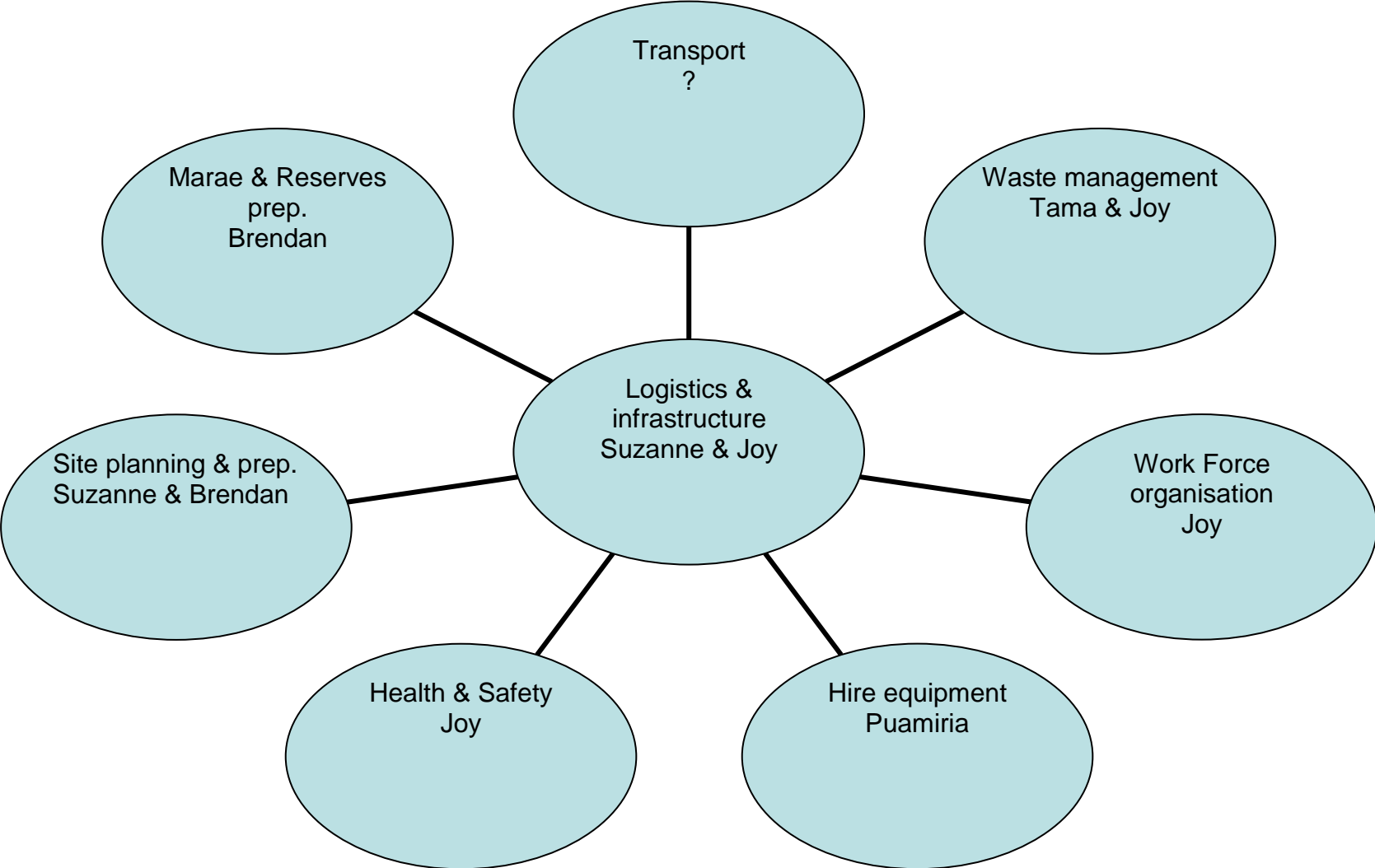
Communication & Community Liaison – Level 2



Hui Programme – Level 2



Logistics & Infrastructure – Level 2



Traffic & Security – Level 2

